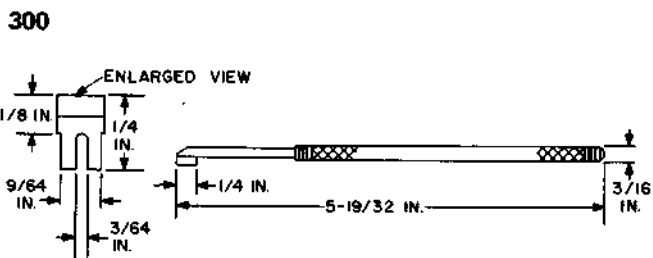


CODED TOOLS

300 TO 315

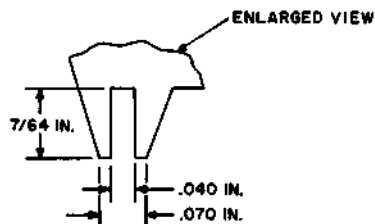
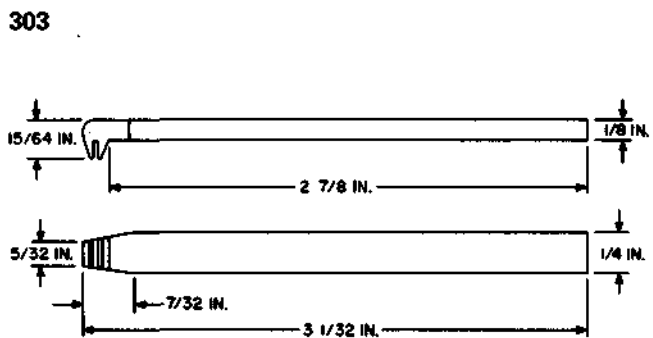
DESCRIPTION



Spring adjuster. For general use.

301 **MFR DISC**
Replaced by the 379A tool.

302 **MFR DISC**
Replaced by the 363 tool.



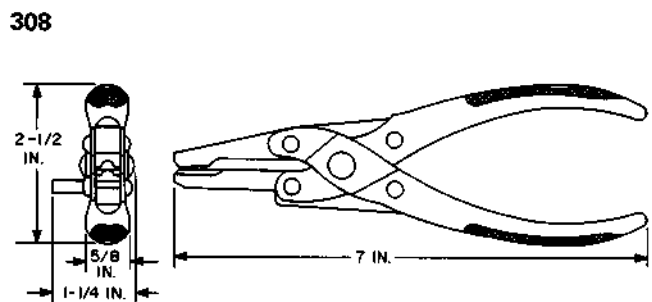
Spring adjuster. Replaces the 105 and 234 tools.
For general use.

304 **MFR DISC**
Replaced by the 344 tool.

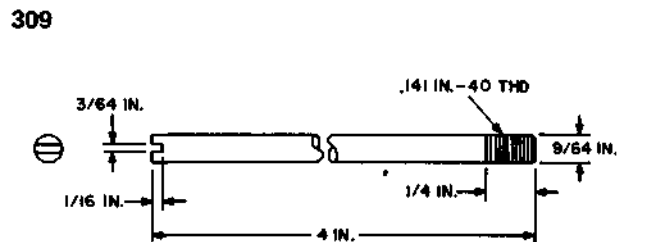
305
Replaced by the KS-8097 offset box wrench.

306 **MFR DISC**
Replaced by the 417A tool.

307 **MFR DISC**
Replaced by the 359 tool.



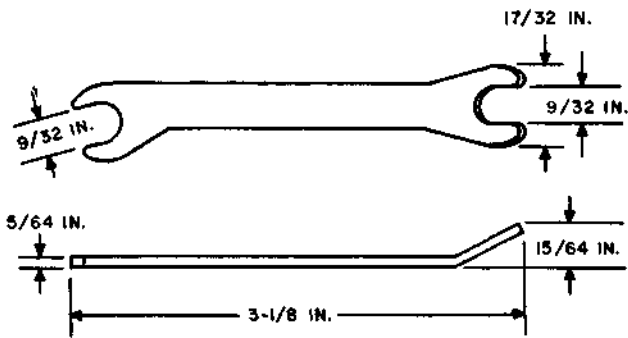
Brush spring crimper. For use on 14-type commutator brushes.



Threaded stud. For use in reassembling bearings of small motors and generators.

310 **MFR DISC**
Replaced by the 310B tool.

310B



9/32-inch hex. open double-end offset wrench.
Replaces the 310 tool. For general use.

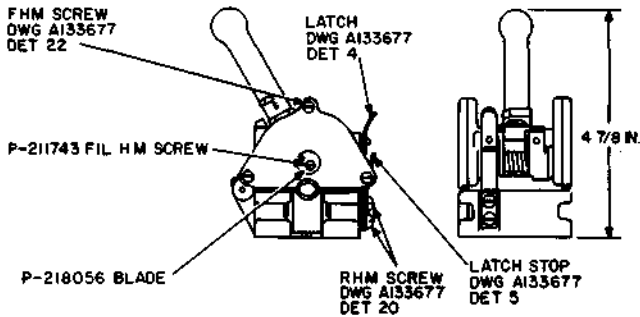
→311←

MFR DISC

Replaced by the 216C tool.

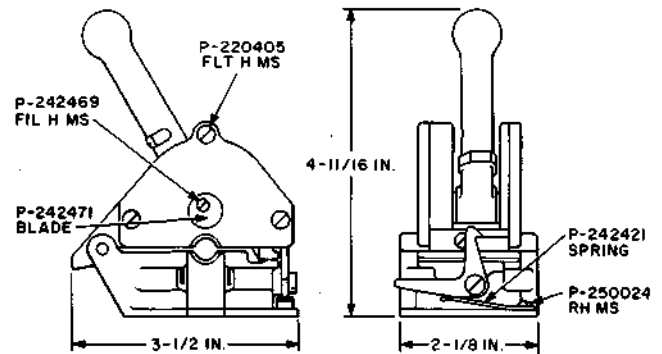
312

A&M ONLY



Cord cutter. The base is provided with screw holes for attaching to the KS-5263 cord repair table. For use in repairing switchboard cords by the punched hole method. The information covered herein replaces the part of Section 074-000-006, Issue 1, applying to this tool.

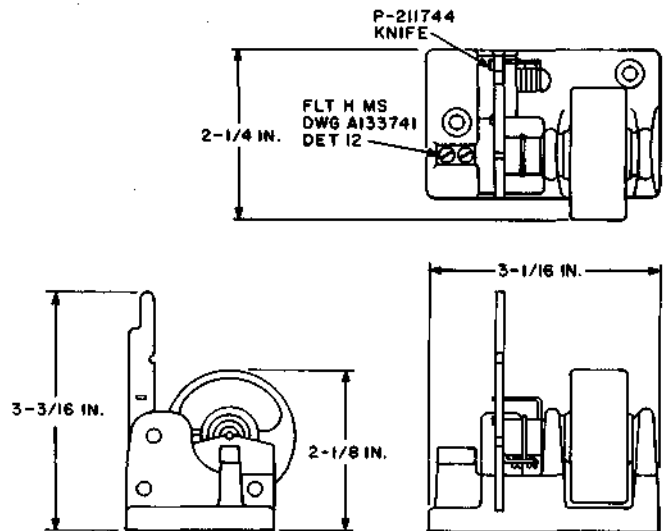
312B



Cord cutter. The base is provided with screw holes for attaching to the KS-5263 cord repair table. For use in repairing switchboard cords by the solderless cord tip method.

313

A&M ONLY



Conductor braid cutter. For use in repairing switchboard cords by the punched hole method. The information covered herein replaces the part of Section 074-000-006, Issue 1, applying to this tool.

314

MFR DISC

Replaced by pliers, notched diagonal, per KS-7139.

315

MFR DISC