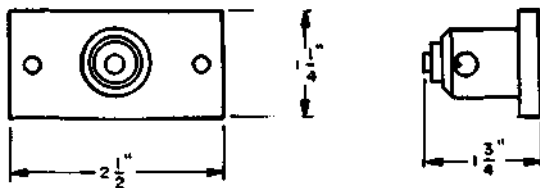


CODED TOOLS
567A TO 583A
DESCRIPTION

567A Manufacture Discontinued.

Replaced by the 567B tool.

567B

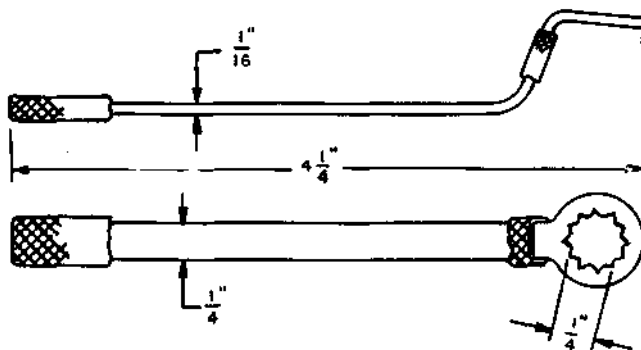


Pad Assembly Tool

Replaces the 567A tool.

For assembling 101A pads to 104A or 104B adapters.

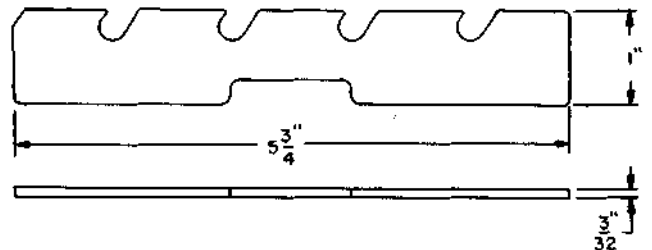
568A



1/4" 12 Point offset box wrench

For use on 263- and 264-type relays.

569A

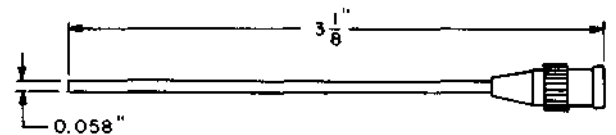


Spring support

Replaces the 543A tool.

For use on 245-, 254-, 263-, and 264-type relays.

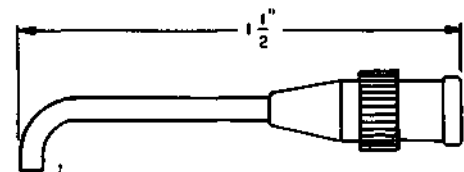
570A



Straight nozzle. This tool forms part of the 1003A tool kit and 431A tool.

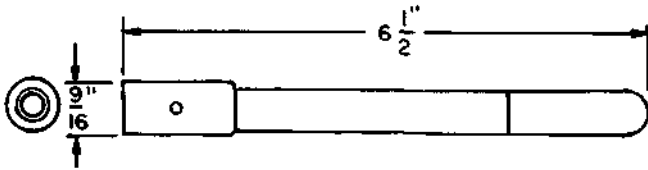
For general use in lubricating.

571A



Curved nozzle. This tool forms part of the 1003A tool kit.

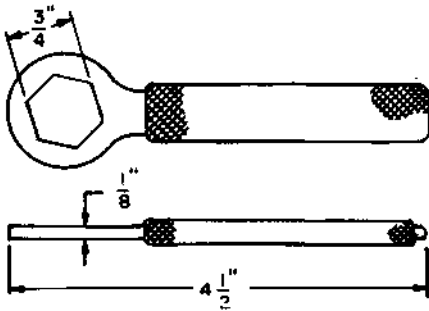
572A



Test probe

For use with 1A Fault Locator Test Set.

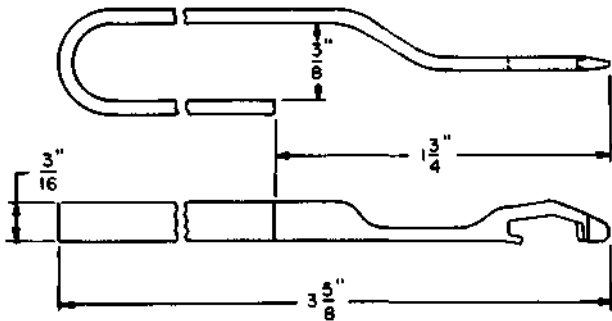
573A



3/4" Hex. single end box wrench

For general use.

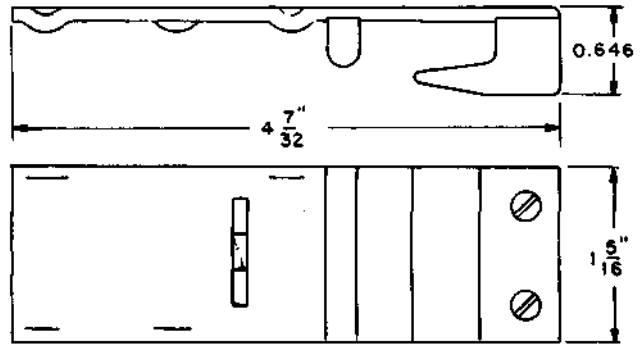
574A



Tab depressor

For checking spring pressure on 304-, 324- and similar type switches.

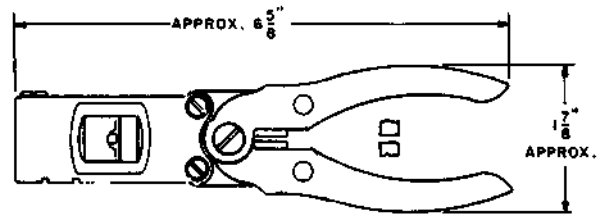
575A



Feeder brush aligner

For replacing feeder brushes in No. 10-, 11-, 26- and 27-type banks.

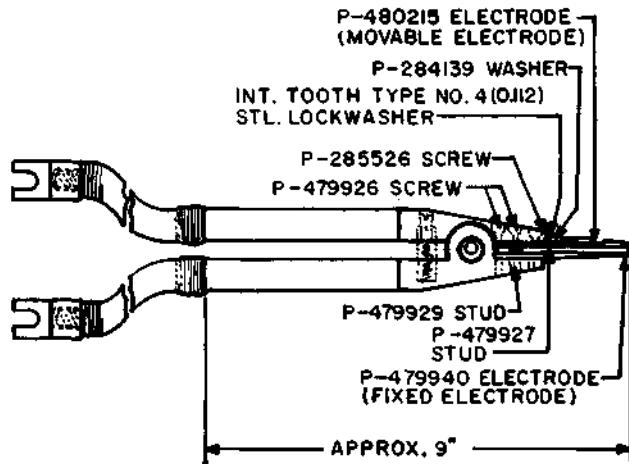
**576A
576B
576C**



Cord tip press

The 576A tool is used for placing the 132 and 133 cord tips on the S3A and similar cords used with 109-, 110-, 309- and 310-type plugs. The 576B tool is used for placing the 135 cord tips on the S2A and similar cords used with the 47-type plugs. The 576C tool is used for placing 107 cord tips on MIG wiper cords of AECO step-by-step switches.

577B



Welding pliers

This tool forms a part of the 1004B tool kit. Leads are approximately 36 inches long.

For use in replacing metal contacts on relays and other central office apparatus.

The 578B tool has white handles and is for general use when removing contacts from relays having flat type contact springs. Replaces the 578A tool.

The 578C tool has red handles and is used for removing contacts from flat type contact springs of relays such as multicontact and relays with offset contact springs. It has a shorter tip than the 578B tool and an adjustable cutting stroke.

The 578B and 578C tools are component parts of the 1011B tool kit and the 578E tool is a component part of the 1013A tool kit.

The 578D tool has black handles and is used when removing contacts from control contact springs of KS-13835 readers.

The 578E tool has black handles and is used for removing contacts from the twin movable springs of wire spring relays.

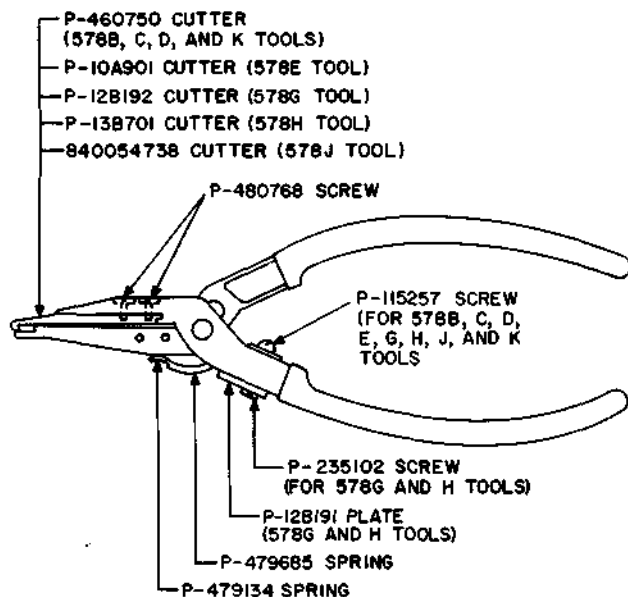
The 578G tool has yellow handles and is used when removing contacts from flat springs of the 229 and 230 type relays. The P-12B191 plate, furnished with the pliers, is required when removing certain contacts.

The 578H tool has green handles and is used when removing precious metal contacts from crosspoint contact springs of 324, 325, 328, 334 and 338 type crossbar switches in connection with the 1004A and 1004B tool kits.

◆ The 578J tool has black handles and is used when removing the 25 mil high silver twin-wire contacts used on certain codes of multi-contact relays (286, 287, and 288 types).

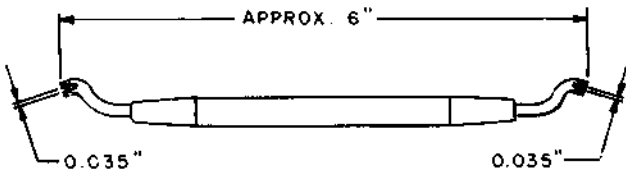
The 578K tool has brown handles and is used when removing the inner contacts on U- and Y-type relays.◆

- 578B**
- 578C**
- 578D**
- 578E**
- 578G**
- 578H**
- ◆ **578J**
- 578K**◆



Contract stripping pliers

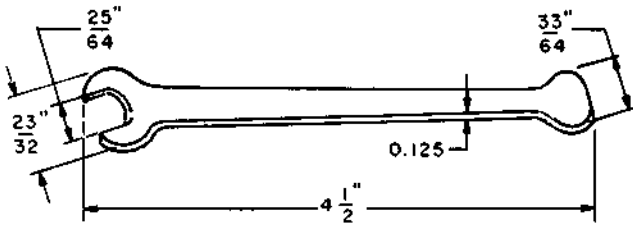
579A



Adjuster

For adjusting vertical unit multiple strips of 300-, 304-, 324- and similar type switches.

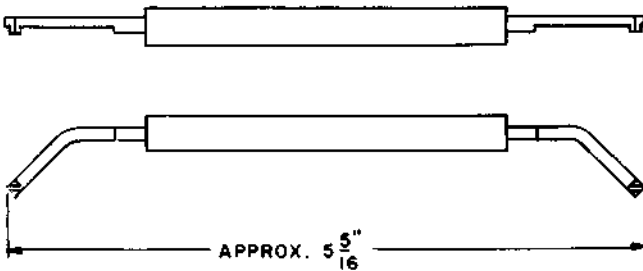
581A



25/64" Flat open end wrench.

For use on the 197- and 198-type switches.

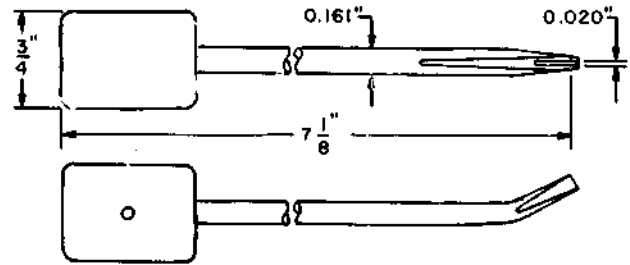
582A



Spring adjuster

For adjusting the 0.030" spring tangs next to the core on UA type relays.

583A



Spring adjuster

Replaces the D-159890 Multiple Brush Adjuster.

For adjusting panel multiple brushes.