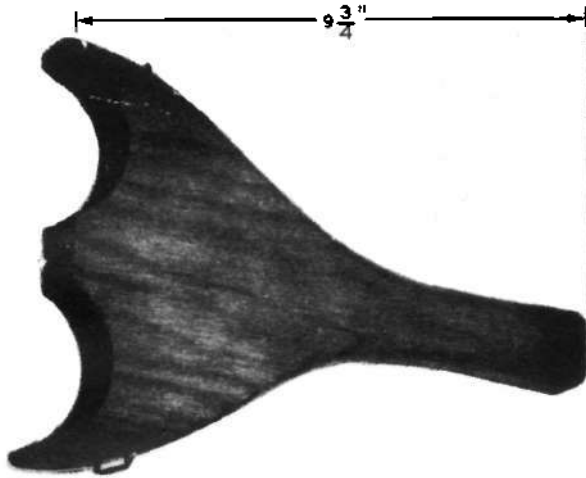


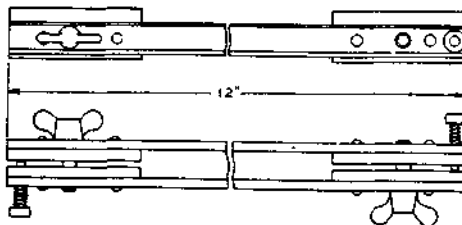
CODED TOOLS
NO. 584A TO 590A
DESCRIPTION

TOOL, 584A



Cork Roll Cleaner. Order separately: Tape, Cotton, 1 in. x 18 yd. roll, AT-6684.
For use in cleaning cork rolls of friction roll drives.

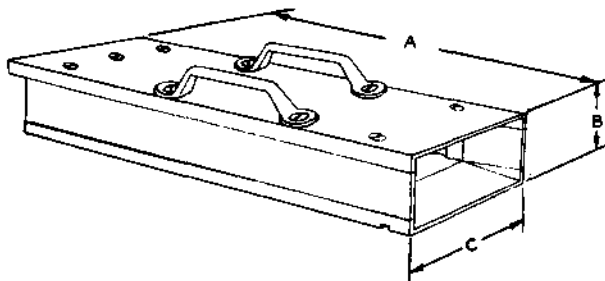
TOOL, 585A



Clamp

For use on 113- and similar type jack mountings.

TOOL, 586A
→ TOOL, 586B



Guard and Holder

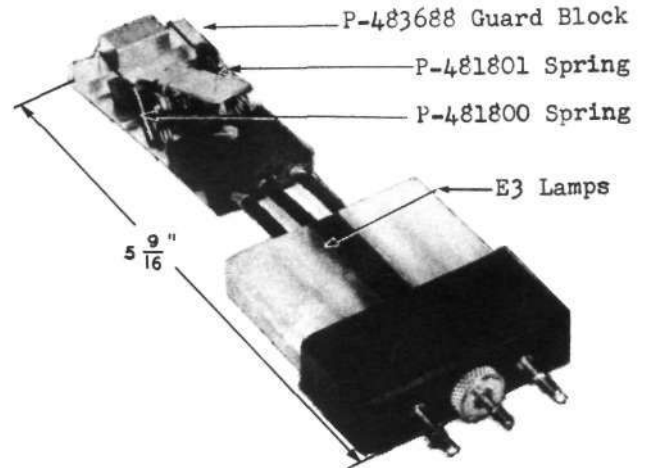
Dimensions

	<u>"A"</u>	<u>"B"</u>	<u>"C"</u>
No. 586A	6-7/8"	1-5/16"	2-1/2"
No. 586B	6-7/8"	2-1/8"	2-7/8"

The No. 586A tool forms a part of the No. 1004B tool kit and is the guard and holder for the No. 577A tool.

The No. 586B tool forms a part of the No. 1013A tool kit and is the guard and holder for the No. 577C and 577D tools of the No. 636A tool. With the exception of a center partition, this tool is similar to the No. 586A tool.

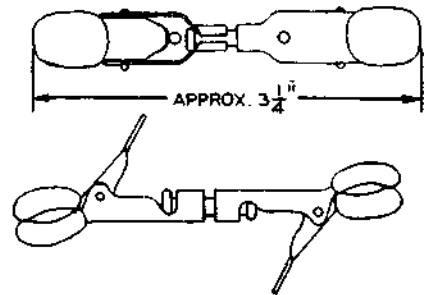
TOOL, 587A



Contact Closure Indicator. This tool forms part of the J94724 contact closure test set.

For use on 280- and similar type relays.

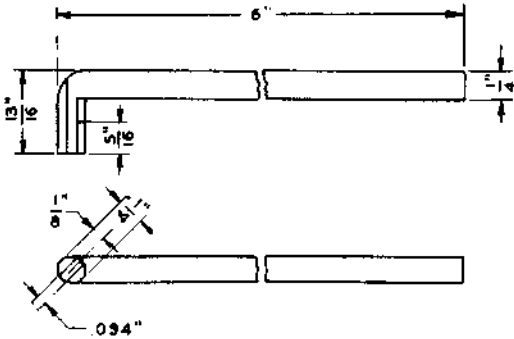
TOOL, 588A



Cord Support. This tool forms part of the J94724 contact closure test set.

For use with the No. 587A tool.

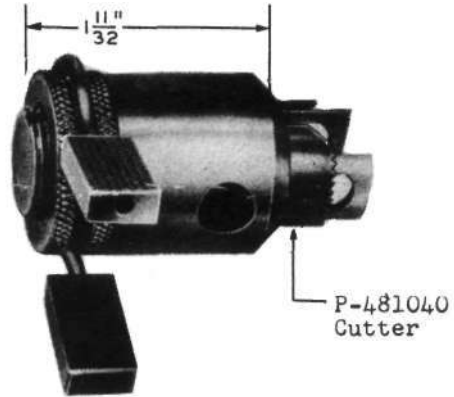
TOOL, 589A



Spring Adjuster.

For use on helical spring type clutches.

TOOL, 590A



Oil Closure Cutter

Supplied with one P-481040 cutter, one P-481039 pin, and one carrying case (pin and carrying case not illustrated).

For use in restoring oil closure clearance for the shaft extension for bearing boxes of friction roll drives.