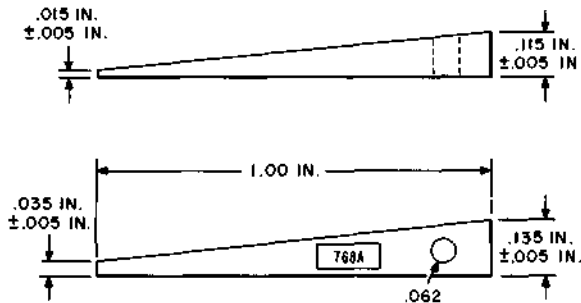


CODED TOOLS

768A THROUGH 780A

DESCRIPTION

768A



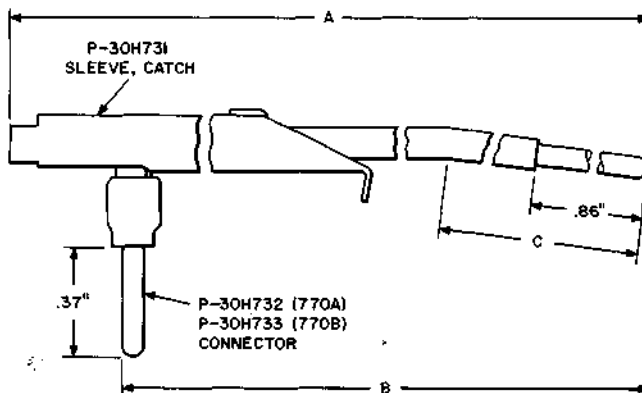
A plastic, orange-colored, wedge-type, blocking tool. For use in blocking the armatures of wire spring relays in the operated and unoperated positions. It may also be used to block operated or unoperated U-, UA-, UB-, and Y-type relays equipped with either the former nut or the new welded backstop and CA-CF type small crossbar switches. Replaces the KS-16887 L1 wedge and the 508A tool.

→769A←

MFR DISC

Replaced by the KS-20962 connecting bag.

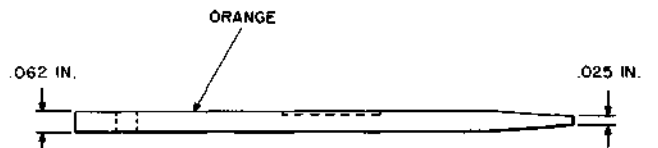
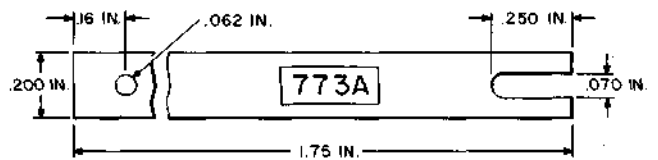
770A AND 770B



TOOL	A	B	C
770A	6.26	5.68	2.00
770B	5.26	4.68	1.38

Test connector. The 700A tool is for use in making test connections to 5- and 12-type registers. The 770B tool is for use in making test connections to 14-type registers.

773A



An orange-colored, wedge-shaped, blocking tool of insulating material. For use in blocking the HOLDING-OFF-NORMAL unit for the CA-CF types of small crossbar switches.

774A



774A (Cont)

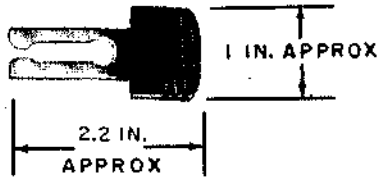
Special pliers. For use in adjusting paddles on the horizontal select bar on the CA-CF types of small crossbar switches.

→775A←

MFR DISC

Replaced by the KS-21028 tool.

777A



Locking tool. To lock the horizontal select bar on the CA-CF types of small crossbar switches.

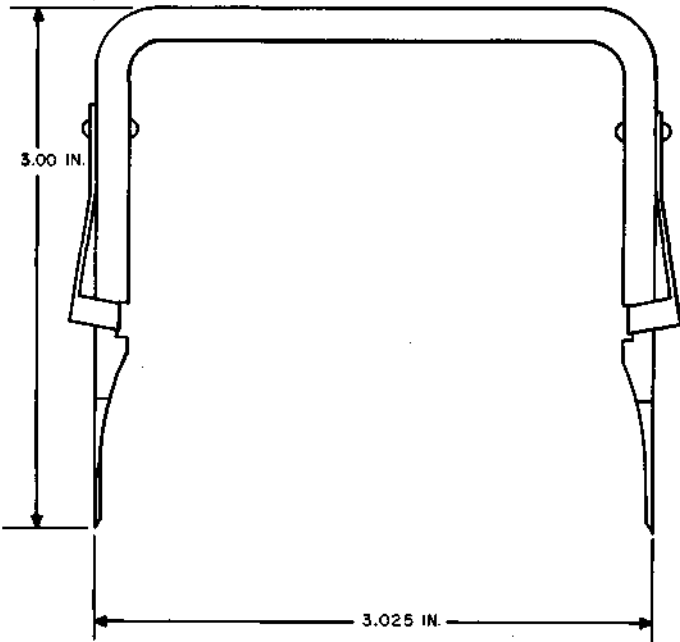
779A

For use in all No. 1 ESS [2-wire, 4-wire, and No. 1 ESS arranged with data features (ADF)]. For detailed information on this tool, refer to SD-1A298-01.

780A

For use in No. 1 ESS centrex offices. For detailed information on this tool, refer to SD-1A229-01.

→792A←



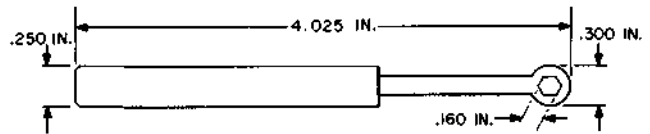
For use in removing 82A and 83A apparatus mountings.

→793A←



Used for insertion and removal of all paddleboards.

→808A←



Torque wrench. For use with the 841282635 clamp.