

TOOLS

ADAPTERS II - DESCRIPTION

1. GENERAL

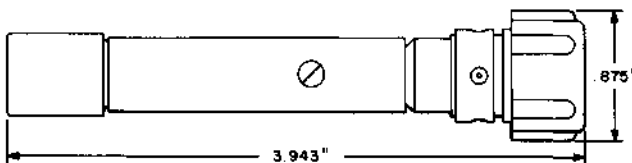
- 1.01 This section covers coded and noncoded Bell System adapters.
- 1.02 When this section is reissued, the reason for reissue will be listed in this paragraph.
- 1.03 The information contained in this section supersedes the corresponding information in Sections 074-122-101, 074-125-101, 074-150-101, and 074-500-101.
- 1.04 See tool index for another Adapter practice.

186A



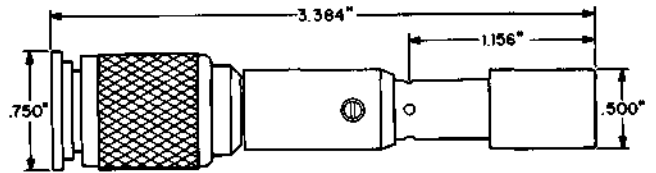
Consists of a metal frame assembly containing a plug and connector. Permits the oscillators mounted in equipment to be extended beyond the assembly face for testing purposes. Initially used in test oscillator panel J68877B.

203A



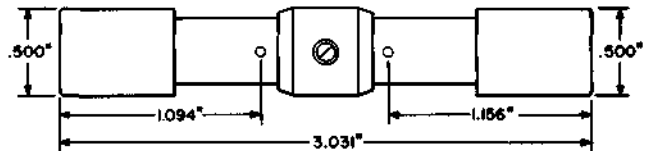
Consists of a 477D jack, less mounting plate, on one end and a KS-14982 L3 jack on the other end. Used for testing and fault-location work in coaxial cables. Initially used in L1, L3, and L4 Carrier Systems.

204A



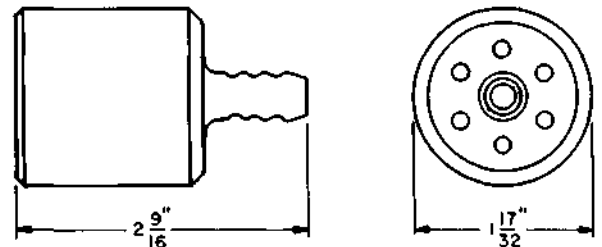
Consists of a KS-14317 L3 plug on one end and a 358C plug on the other. Used for testing and fault-location work in coaxial cables. Initially used in L1, L3, and L4 Carrier Systems.

206A



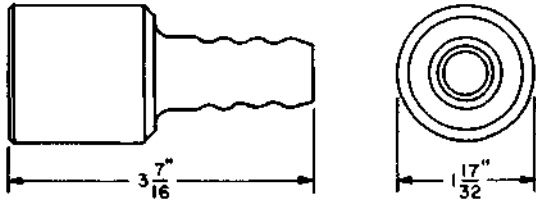
Consists of a 358C plug on each end. Used for testing and fault-location work in coaxial cables. Initially used in L1, L3, and L4 Carrier Systems.

454A



For use in coupling 1/4-inch rubber tubing to the vacuum cleaner hose.

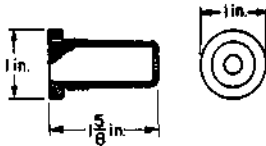
455A



For use in coupling 1/2-inch rubber tubing to the vacuum cleaner hose.

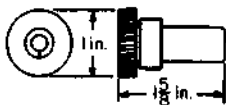
498A

498B



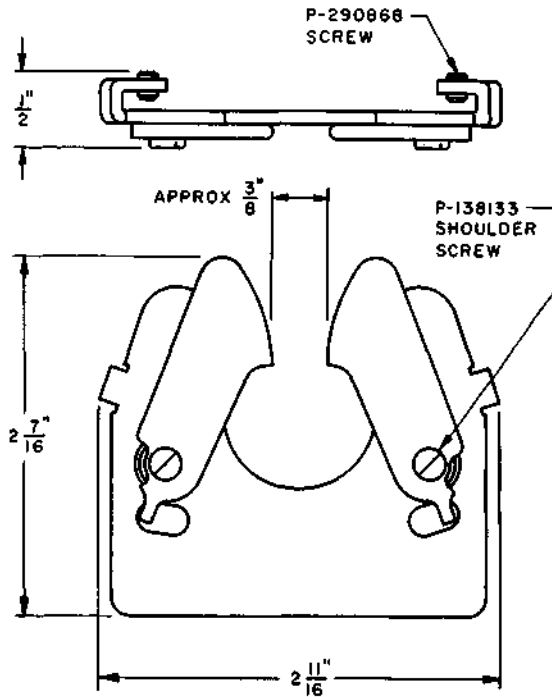
Bushing (adapter). For use with the 497A and 497B tools in cleaning plugs at switchboards. The 498A tool is arranged to hold the 109 and 309 plugs. The 498B tool holds the 110 and 310 plugs.

498C



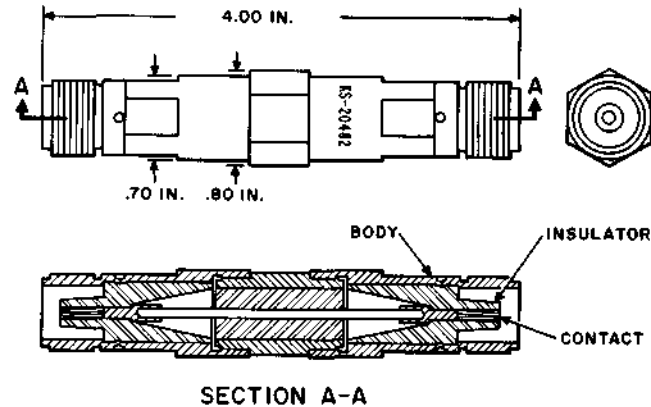
Bushing (adapter). For use with the 497A and 497B tools in cleaning 47-type plugs at switchboards.

721A



For use in adapting the 504A tool for holding KS-14440 or KS-16346 soldering coppers.

KS-20482 L1



A male coaxial adapter arranged for screw-on connection at both ends to a KS-14317 L3 plug. For use in testing and fault-location work in L1, L3, and L4 Carrier Systems.